

KAPILANSH

'Ductile Iron' Manhole Covers, Frames & Gratings

As per BS EN-124



Manufacturers of centrifugally Cast (Spun) Iron Pressure Pipes, CI Fittings, CI Soil Pipes & Fittings
Cast Iron Earthing Electrodes & CI & DI Manhole Covers, Frames & Gratings.

Providing Superior Plumbing, Drainage & Earthing
Solutions With Experience Of Over Two Decades



KAPILANSH

Dhatu Udyog Pvt. Ltd.

is Strategically located at Nagpur in central India. We cater to the needs of elite clients across India, supported by a team committed to provide the best service apart from the best product in the market regardless of the quantum, size & volume of requirements.

We believe Customer focus is key to our business success.

The Keen, Constant efforts made by guidance of our team of technician of the field, have come to be fruitful to make success of the products of D. I. Manhole Covers, Frames & Grating Manufactured.

As we are bound to do so for the sake of our reputation, we always maintain a vigorous check at every step during the manufacturing process for ensuring each product is up to the mark, both quality and durability wise.

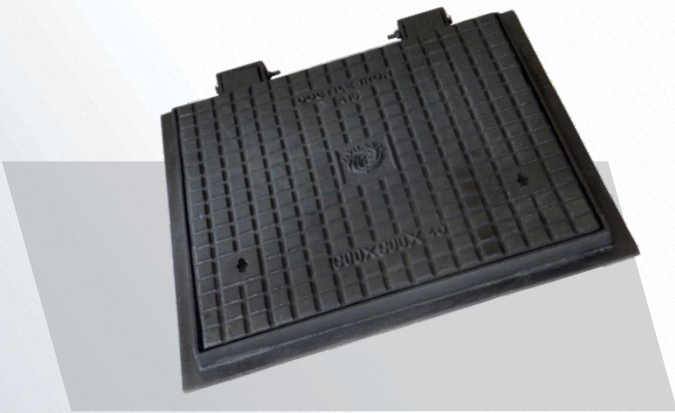
There lies the secret of the success and popularity, which we have arrived at.

Square Manhole Cover with Frame



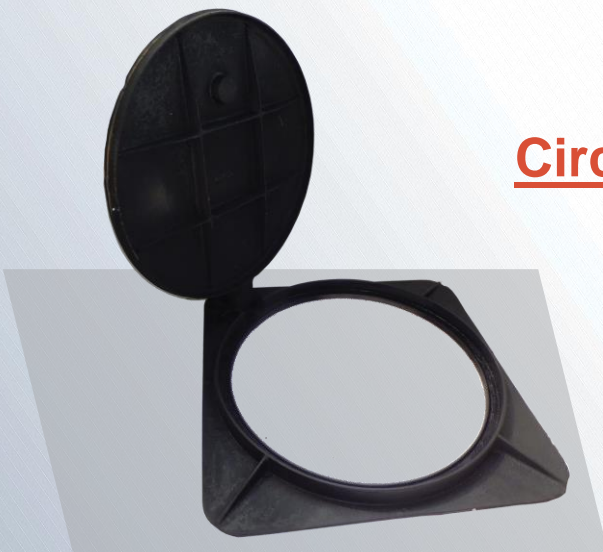
Sr. No.	Size (MM)	Grade	Height	Wt. App (Kg)
1	300 X 300	A-15	40	8
2	450 X 450	A-15	40	22
3	450 X 450	B-125	75	45
4	600 X 600	A-15	40	42
5	600 X 600	B-125	75	65
6	600 X 600	C-250	100	90
7	750 X 750	C-250	75	125
8	900 X 900	B-125	75	125
9	900 X 900	C-250	100	170

Rectangular Manhole Cover with Frame



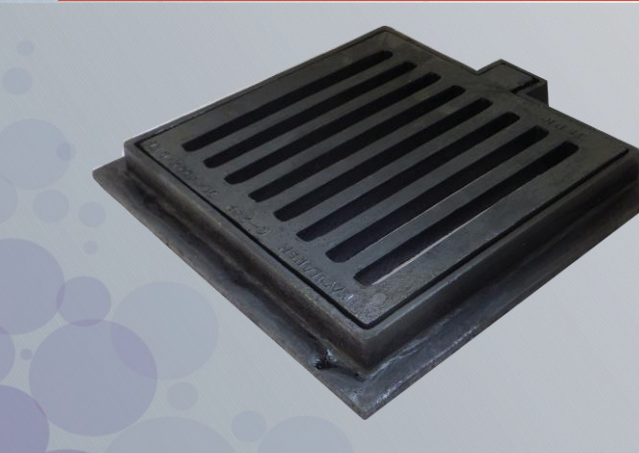
Sr. No.	Size (MM)	Grade	Height	Wt. App (Kg)
1	450 X 600	A-15	40	30
2	450 X 600	B-125	75	70
3	450 X 600	C-250	75	100
4	450 X 900	A-15	40	50
5	450 X 900	B-125	75	75
6	450 X 900	C-250	100	125
7	600 X 900	A-15	40	65
8	600 X 900	B-125	75	105
9	600 X 900	C-250	100	150

Circular Manhole Cover with Frame



Sr. No.	Size (MM)	Grade	Height	Wt. App (Kg)
1	450	C-250	100	55
2	500	A-15	40	25
3	500	B-125	75	45
4	500	C-250	100	65
5	600	A-15	40	40
6	600	B-125	75	65
7	600	C-250	100	85

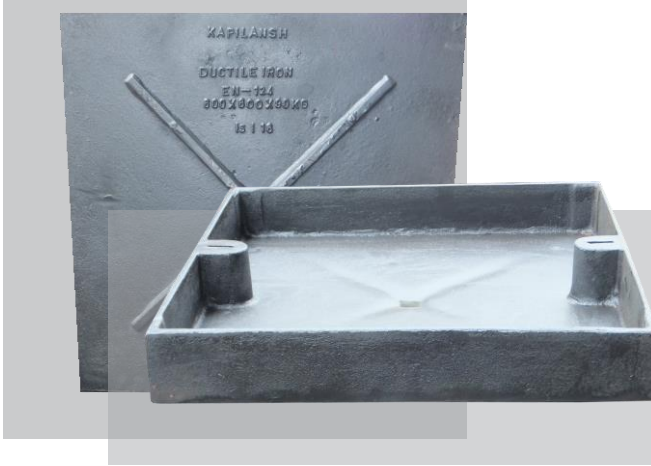
Hinged Grating with Frame



Sr. No.	Size (MM)	Grade	Height	Wt. App (Kg)
1	450 X 450	A-15	50	32
2	450 X 600	A-15	50	38
3	600 X 600	B-125	75	70
4	600 X 600	C-250	75	90

KAPILANSH

Recessed Manhole Cover with Frame



Sr. No.	Size (MM)	Grade	Height	Wt. App (Kg)
1	450 X 450	A-15	60	31
2	450 X 450	B-125	60	35
3	600 X 600	A-15	50	47
4	600 X 600	B-125	65	65

SALIENT FEATURES :

- Manufactured as per BS EN-124 Standard.
- Safe handling due to high strength and low weight.
- Open / Closed keyholes for easy lifting.
- Frames for better security.
- Anti skid checker design.
- Large open area for water drainage.
- Heavy duty traffic loading.
- Multiple grates for easy handling.

LOAD CATEGORISATION :

GRADE A-15	1.5 MT (LIGHT DUTY)
GRADE B-125	12.5 MT (MEDIUM DUTY)
GRADE C-250	25.0 MT (HEAVY DUTY)

OPTIONAL FEATURES: *

- Locking arrangement available, if required.
- New patterns can be developed within 6 weeks
- Buyer's logo provided as per buyer's requirement*

Plumbing & Drainage Solutions for the Life Time.....



An ISO 9001 Certified Company

Manufacturers of centrifugally Cast (Spun) Iron Pressure Pipes, CI Fittings, CI Soil Pipes & Fittings, Cast Iron Earthing Electrodes & CI & DI Manhole Covers, Frames & Gratings.

* Subject to Terms and conditions.

Due to continuous research and development, specifications are subject to change without notice, hence this brochure has no legal bindings.